

**Important Information:**

The fund invests primarily in equities and equity related securities of companies worldwide which the investment manager believes will benefit from effort to accommodate or limit the impact of global climate change and which meet the investment manager's sustainability criteria.

1. The fund invests in equity securities would subject to equity investment risk.
2. The fund may subject to risk relating to sustainable investment approach, including concentration and exclusion risks, risk relating subjective judgement in investment selection, etc..
3. The fund invests in concentrated sector/geographical locations and may be subject to a higher level of risks than a fund investing in a more diversified portfolio/strategy.
4. The fund invests in the emerging and less developed markets which may be subject to greater risks, including ownership and custody risks, political and economic risks, market and settlement risks, etc..
5. The fund may use derivatives to meet its investment objective. Derivatives exposure may involve higher credit risk and counterparty risk, liquidity risk and valuation risk. In adverse situations, the fund may suffer significant losses from their derivative usage for hedging.
6. For distribution share classes/units, the distribution rate is not guaranteed. Distribution yield is not indicative of the return of the fund. Distributions may be paid out of the capital of the fund at the Manager's discretion. This amounts to a return or withdrawal of part of the amount you originally invested or capital gains attributable to that and may result in an immediate decrease in the net asset value per share or decrease in the value of units of the relevant Distribution Units.

You should not make any investment decision solely based on this document. Please read the relevant offering document carefully for further fund details including risk factors.

# Schroders

## Schroder ISF Global Climate Change Equity

**Begin your climate change investment  
journey today**

30 September 2023



Climate change will be a key driver of the global economy in the coming decades, reshaping industries and rippling up and down value chains. Capital and value will be reallocated on an unprecedented scale, creating investment opportunities across a multitude of areas.

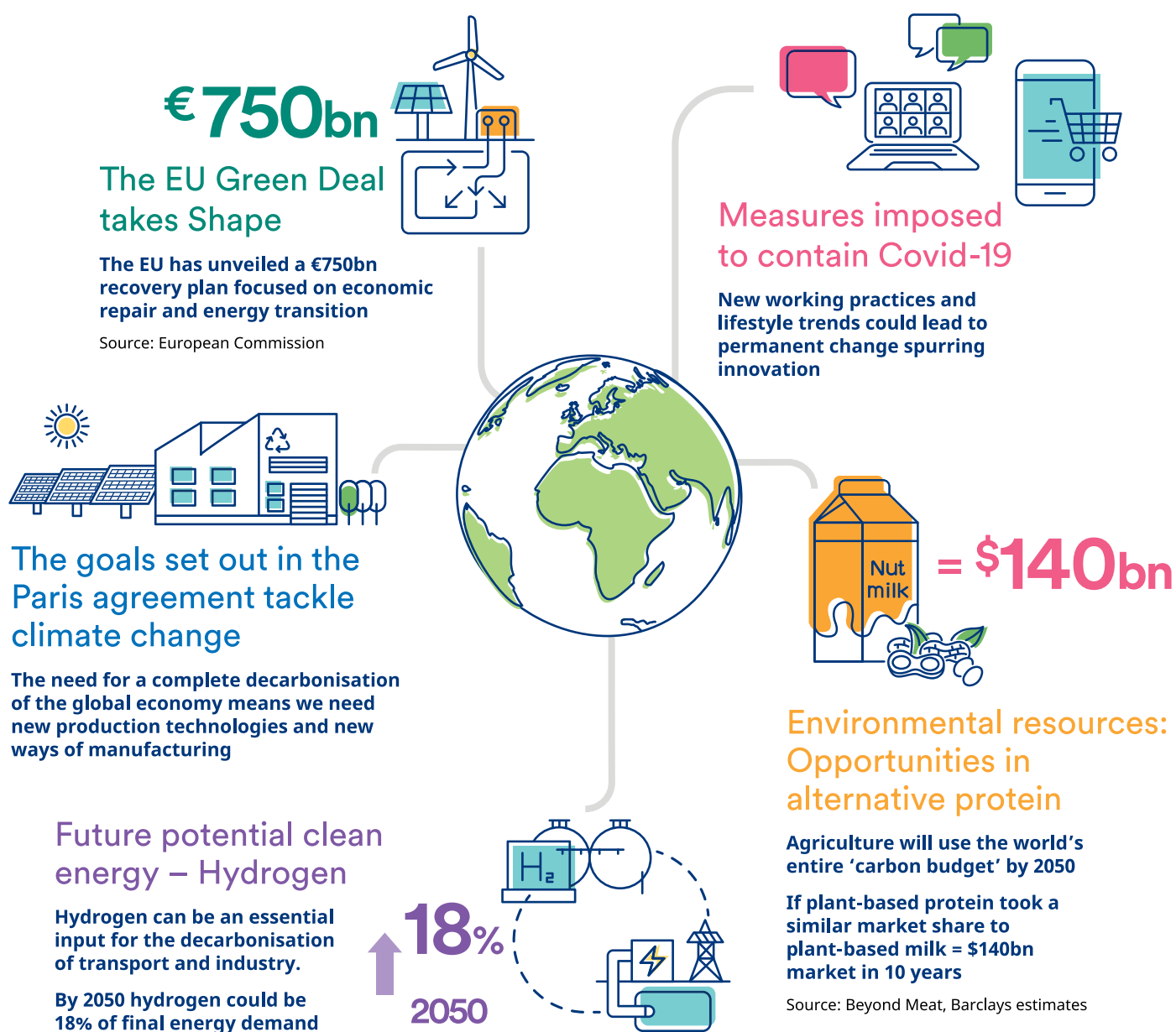
Schroder ISF Global Climate Change Equity is an actively managed, global equity fund capturing opportunities around the world by investing in companies we believe will be positively impacted by efforts to transition to a low carbon economy.

The future is already here – begin your climate change investment journey today!

## Where are the investment opportunities?

We believe that the companies that embrace the challenges and recognise the threats of climate change early, may outperform the broader market and ultimately deliver long-term returns to investors. Those companies that fail to respond are at risk of falling by the wayside.

The good news is that change is happening and there is already a rich universe of companies with the transition to a low-carbon world at the heart of their business.



Source: Hydrogen Council, 2020. IEA ETP Hydrogen and Fuel Cells C88; National Energy Outlook 2016

## Five key themes to capture wide range of investment opportunities

Climate change will impact every company, so we don't limit ourselves to particular sectors. This way we can build a diversified portfolio of companies, all linked to climate change. Our investment process is built around five key themes:

# 1

## Clean Energy

Clean energy such as solar and wind technologies has already become the most cost-efficient form of power in many parts of the world. The rapid growth of the renewable energy industry is likely to continue. Therefore, we see long-term investment opportunities in clean energy sectors.

### Investment opportunities:

Renewable energy, grid infrastructure



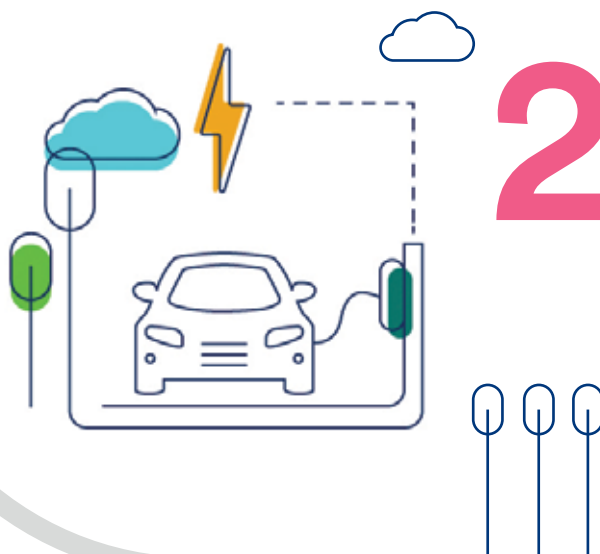
# 2

## Sustainable Transport

More affordable, reliable electric vehicles have meant advancements in public transport and goods delivery - all leading to cleaner and congestion free cities.

### Investment opportunities:

Railroad infrastructure, electric, hybrid and natural gas transport



# 3

## Environmental Resources

New world companies are fast developing concepts such as plant-based foods, precision farming technology and reverse vending recycling schemes. This will help us carve out more sustainable processes.

### Investment opportunities:

Water infrastructure, agricultural productivity and forestry





# 4

## Energy Efficiency



New homes are being built from sustainable, energy efficient materials. And demand and response power technologies are fast becoming a reality to meet the climate change targets.

### Investment opportunities:

Lightweight materials, lighting, smart grid, test measurement and controls



# 5

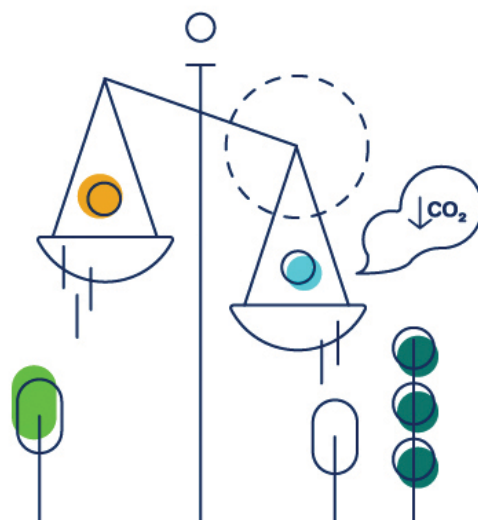
## Low-Carbon Leader



Industry is adopting processes to eliminate carbon emissions and consumers are embracing products and services with strong environmental credentials.

### Investment opportunities:

Low-carbon disruptors, low-carbon industry, leaders



# Schroder ISF Global Climate Change Equity

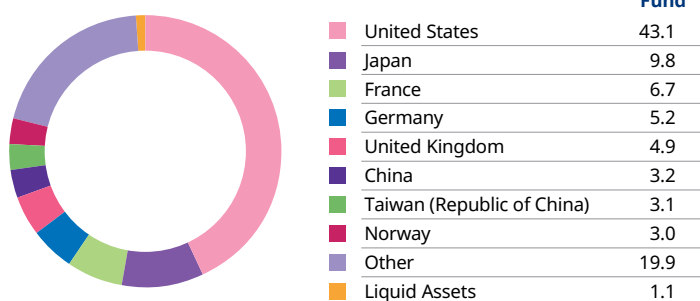
## Fund features

- Enjoy capital growth potential through investing in companies we believe will be positively impacted by efforts to transition to a low carbon economy
- Active management with benchmark unconstrained
- Filter the best ideas list, resulting in a high conviction portfolio of 40 – 70 stocks

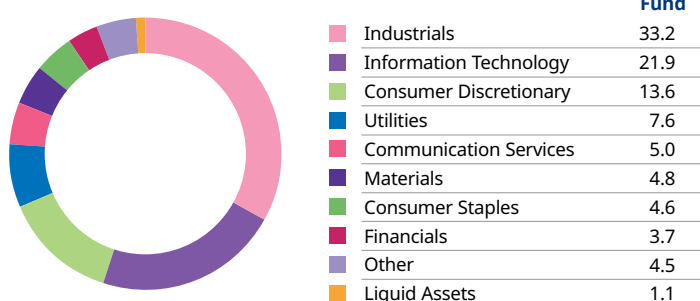
## Available share classes

Share classes	ISIN code	Bloomberg ticker
A Acc – USD	LU0302445910	SCGLLAA LX
A-Acc – EUR Hedged	LU0306804302	SCGCAHD LX
A-Acc – HKD	LU2275660780	SCCCEAH LX
A1-Acc – USD	LU0302446215	SCGLCA1 LX

## Geographical allocation\* (%)



## Sector allocation\* (%)



## Top holdings

Equity	Holdings (%)
Microsoft Corp	5.4
Alphabet Inc	5.0
Schneider Electric SE	3.5
Iberdrola SA	2.9
Swiss Re AG	2.7
Amazon.com Inc	2.7
Prysmian SpA	2.3
Hitachi Ltd	2.3
Johnson Controls International plc	2.2
Weyerhaeuser Co	2.1

## Fund performance

Cumulative performance (%)	YTD	3-mth	1Yr	3Yrs	5Yrs	10Yrs
<b>Fund</b>	3.1	-8.2	14.3	6.9	40.6	98.4

Annual performance (%)	2022	2021	2020	2019	2018
<b>Fund</b>	-25.0	10.3	50.5	24.5	-11.4

Source: Morningstar

## Key information

<b>Fund objective</b>	The Fund aims to provide capital growth by investing in equity and equity related securities of companies worldwide which the Investment Manager believes will benefit from efforts to accommodate or limit the impact of global climate change and which meet the Investment Manager's sustainability criteria.
<b>NAV per share (class A Acc)</b>	USD 21.0718
<b>Hi/Lo (past 12 mths, class A Acc)</b>	USD 23.7173/17.9003
<b>Fund manager</b>	Isabella Hervey-Bathurst, Simon Webber
<b>Launch date</b>	29/06/2007
<b>Fund size (million)</b>	USD 3,238.53
<b>Initial charge up to (class A)</b>	5%
<b>Management fee (class A)</b>	1.5% p.a.
<b>Dealing frequency</b>	Daily
<b>Financial year end</b>	31/12

Note: The fund has environmental and/or social characteristics within the meaning of Article 8 of Regulation (EU) 2019/2088 on Sustainability-related Disclosures in the Financial Services Sector (the "SFDR").

## Fund Award

### Schroder ISF Global Climate Change Equity



### ESG Clarity Awards 2022<sup>1</sup> Climate Focused

Schroder International Selection Fund is referred to as Schroder ISF.

<sup>1</sup> The result of ESG Clarity Awards 2022 is based on the performance of the fund. ESG Clarity Awards 2022 (performance as of 31 March 2022).

# Percentages of allocation may not sum up to 100% due to rounding issue.

All fund information as at 30/09/2023. Source: Schroders unless stated otherwise. Fund performance based on Class A Accumulation; NAV-NAV in USD with net income re-invested, net of fees. The fund size quoted includes all classes of the fund. Performance is calculated from the share class' since launch date (29/06/2007).

Investment involves risks. Past performance is not indicative of future performance. Please refer to the relevant offering documents for fund details including risk factors. This material, including the website, is issued by Schroder Investment Management (Hong Kong) Limited and has not been reviewed by the SFC.

Management Company: Schroder Investment Management (Europe) S.A., 5, rue Höhenhof, L-1736 Senningerberg, Grand Duchy of Luxembourg

Supervisory Authority: Commission de Surveillance du Secteur Financier, 110, route d'Arlon, L-2991 Luxembourg